

August 21-September 17, 2003

Opening Reception
Thursday, August 21, 5-7pm

**Volume and Space:
A New Dimension for Jewelry**

Ben Neubauer Karen Gilbert
Ayesha Mayadas Donna D'aquino

Imaginative pieces with structure, form, dimension

Nelson Rarities

Fine Estate Jewelry (Aug 21-23 only)

Our tenth year of presenting a premier collection of impressive gems and significant pieces

Carl Gordon Cutler

To benefit College of the Atlantic

Nature unleashed in strong works with a regional flavor from the 1920s



SHAW JEWELRY
100 Main Street
Northeast Harbor

open daily until 6:30pm

shawjewelry.com
877.276.5001
207.276.5000

UPCOMING SHOWS September 18-October 15 **PAINTINGS: CHOO WHYTE, AUTUMNAL JEWELERS, THE LEAF SHOW**

D'AQUINO

**Volume and Space:
A New Dimension for Jewelry**

Ben Neubauer Karen Gilbert
Ayesha Mayadas Donna D'aquino

Move beyond the limits of space with jewelry that takes on another dimension.

SHAW JEWELRY 877.276.5001 207.276.5000
shawjewelry.com 100 Main Street, Northeast Harbor, Maine 04662



**Nelson Rarities
Incredible Estate Jewelry (Aug 21-23 only)**

Another extravagant selection of superb estate jewelry. Our tenth year of presenting important pieces with exciting pasts.

SHAW JEWELRY 877.276.5001 207.276.5000
shawjewelry.com 100 Main Street, Northeast Harbor, Maine 04662



CUTLER

Carl Gordon Cutler (1873-1945)

A master water-colorist in modernist style. Proceeds of this exhibit go to College of the Atlantic for educational projects.

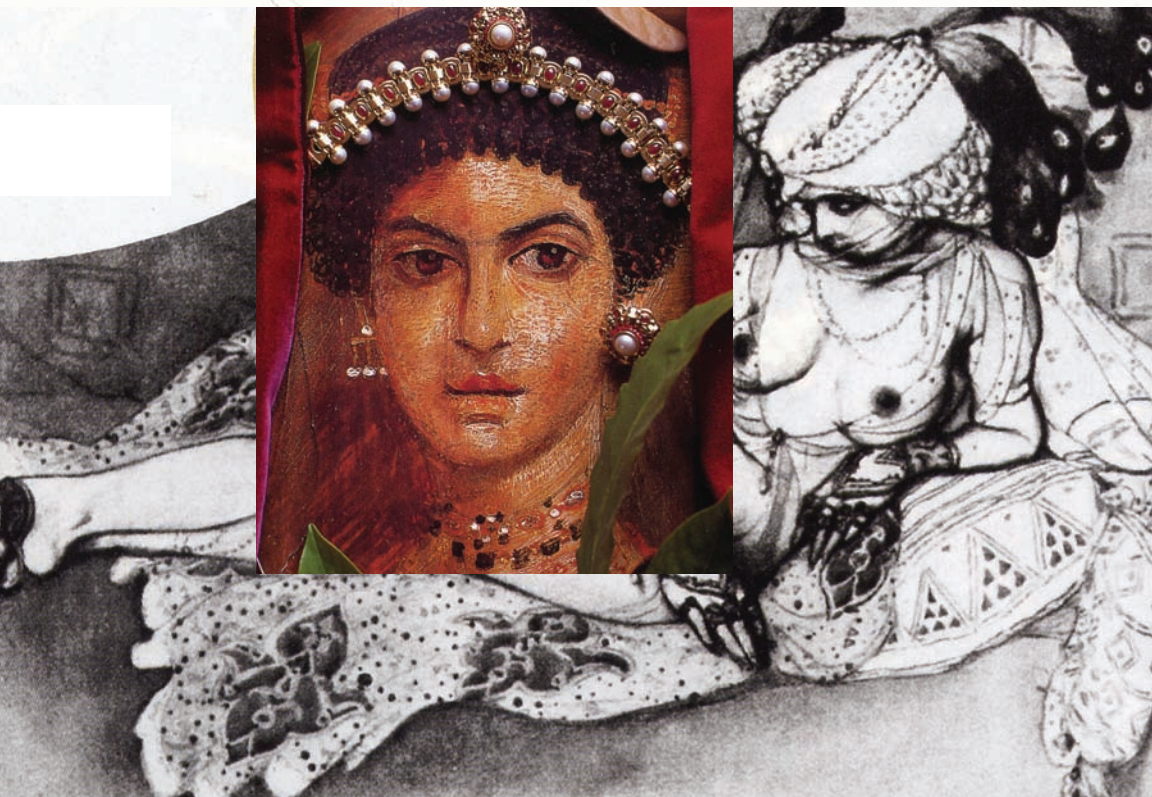
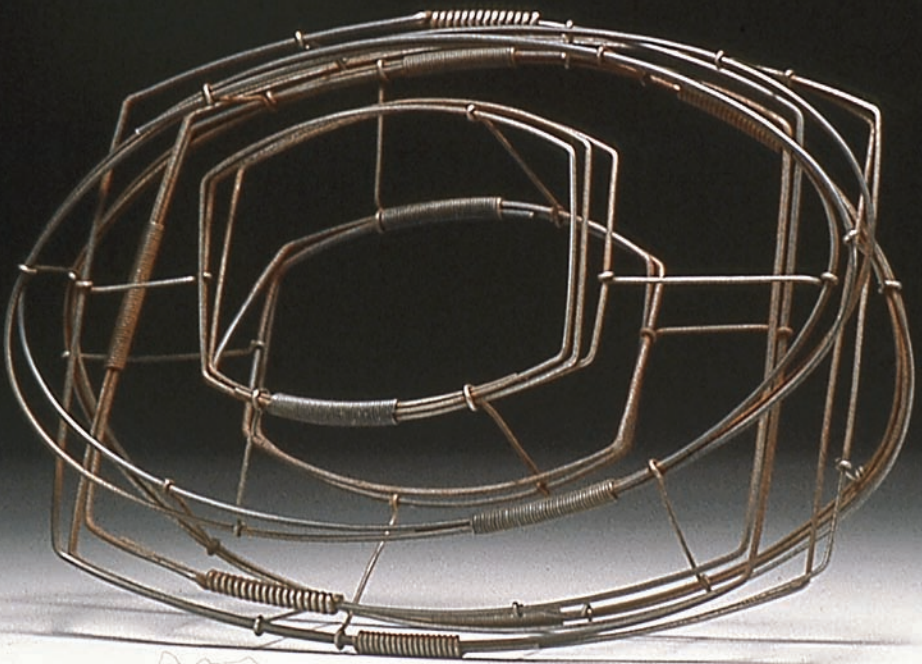
SHAW JEWELRY 877.276.5001 207.276.5000
shawjewelry.com 100 Main Street, Northeast Harbor, Maine 04662



POBox 608
Northeast Harbor
Maine 04662



PRSRT STD
US Postage Paid
Permit No. 46
Bangor, Maine



To benefit
College of
the Atlantic,
our island's
educational
touchstone

