

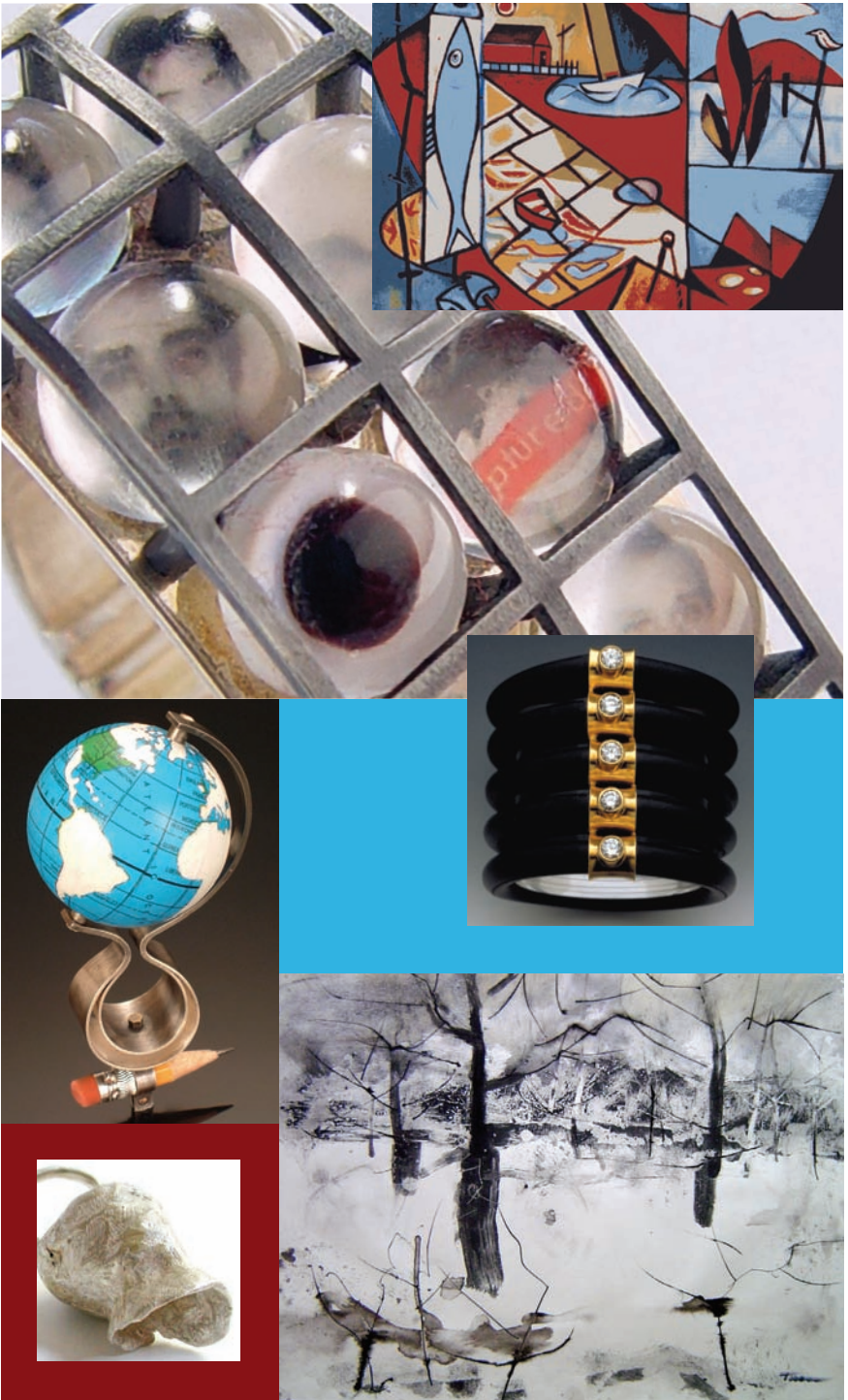
AUGUST

S M T W T F S
4 5 6

RECEPTION 5-7

7 8 9 10 11 12 13
14 15 16 17

Opening Reception Thursday, August 4, 5-7pm



CLOCKWISE: TOP LEFT, TAWEESAK MOUSAWAT; CHRISTINE DHEIN; WILLIAM THON; MELANIE SEILER PETER DECKERS; INSET, FRANCIS HAMABE

200 Rings

A traveling show of incredible variety. Many European and American artists with work from minimal to expressive, diminutive to giant.

Windows to the Past

Paintings from the late observers of Maine landscape.

Francis Hamabe (1917-2002) with a playful and colorful modernist view, James Fitzgerald (1899-1971) who captured the beauty of Katahdin and inland Maine, and William Thon (1906-2000), who created moody and stark black and white works while nearly blind.

FRANCIS HAMABE JAMES FITZGERALD WILLIAM THON

UPCOMING SHOWS

August 18–August 31 **BLACK DIAMONDS/NELSON RARITIES INCREDIBLE ESTATE JEWELRY**
September 1–September 21 **ROBERT SHETTERLY/SUSAN SAUNDERS**



SHAW JEWELRY

www.shawjewelry.com
877.276.5001 207.276.5000

Pre-sorted
First Class Mail
US Postage Paid
Permit No. 46
Bangor, Maine



POBox 608
Northeast Harbor
Maine 04662



August 4–August 17, 2005

200 Rings/Windows to the Past

open daily until 6:30pm

www.shawjewelry.com
877.276.5001 207.276.5000

SHAW JEWELRY 100 Main Street, Northeast Harbor