

JULY

S M T W T F S
19 20 21

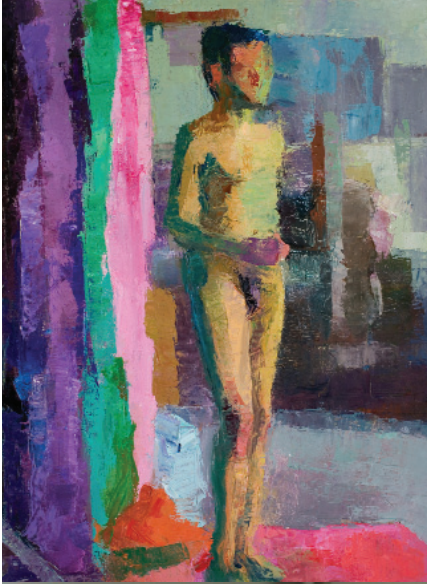
RECEPTION 5-7

22 23 24 25 26 27 28

AUGUST

29 30 31 1

Opening Reception Thursday, July 19, 5-7pm



CLOCKWISE: TOP LEFT, NOLI WISTER; WELLINGTON & COMPANY; CAROLYN MORRIS BACH; TODD PARDON; CONNIE VERRUSIO

Body Parts

Jewelry that references the human body directly or metaphorically. A study of anatomy, beauty, movement and expression common to us all.

CAROLYN MORRIS BACH KRISTIN BEELER LISA BIALAC-JEHIE
DEVON DRISCOLL THOMAS MANN TODD PARDON
CONNIE VERRUSIO ROBERTA & DAVID WILLIAMSON

The Human Form

Artists exploring the shadows, structure, emotions, movements, beauty, subtleties, range and expressions of the human body. A palette of styles and sensibilities honoring our everyday.

JUDITH LARSEN YVONNE MAIDEN NANCY ROTHLAUF NOLI WISTER

Estate Jewelry from New Orleans

The second year of presenting Wellington & Company from the French Quarter. Sourcing from a genteel era of Southern refinement and adornment.

THURSDAY, FRIDAY AND SATURDAY ONLY 19-21

UPCOMING SHOWS

August 2-August 15 **STICKS AND STONES/THOMAS BLAGDEN**

August 16-September 12 **NELSON RARITIES INCREDIBLE ESTATE JEWELRY/**

JACK GESCHIEDT: THE TREE PROJECT/HANNAH SHAW: IN RARE FORM



SHAW JEWELRY

www.shawjewelry.com
877.276.5001 207.276.5000



POBox 608
Northeast Harbor
Maine 04662

Presorted
First Class Mail
US Postage Paid
Permit No. 112
Bangor, Maine



YVONNE MAIDEN

July 19–August 1, 2007

**Body Parts
The Human Form
Estate Jewelry from New Orleans**

open daily until 6:30pm

**www.shawjewelry.com
877.276.5001 207.276.5000**

SHAW JEWELRY 126 Main Street, Northeast Harbor