

JULY

S M T W T F S  
20 21 22

RECEPTION 5-7

23 24 25 26 27 28 29

AUGUST

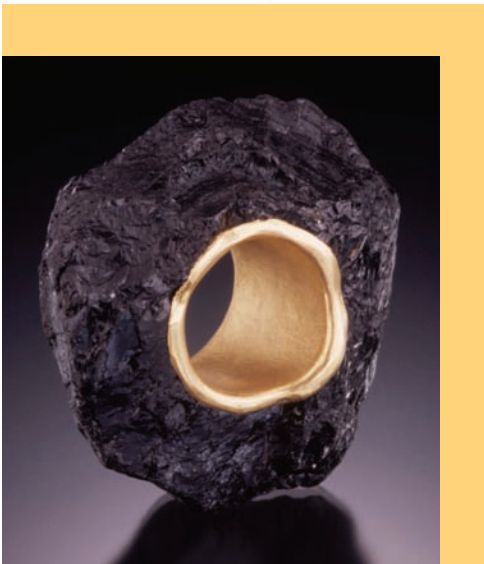
30 31 1 2

**Opening Reception** Thursday, July 20, 5–7pm

PETER RALSTON; INSET, WELLINGTON & COMPANY



CLOCKWISE: TOP LEFT, BIBA SCHUTZ; ANGELA CHENG; DEVTA DOOLAN



**Black and Gold Jewelry**

A marriage of materials and tones that enhance each other.

- BARBARA BAYNE JAMIE CASSAVOY DEVTA DOOLAN ELIZABETH GARVIN
- SARAH GRAHAM HEATHER GUIDERO PRIYA HIMATSINGKA JULIE JERMAN-MELKA
- DAHLIA KANNER CHRISTY KLUG SYDNEY LYNCH MICHELE MERCALDO
- BIBA SCHUTZ KARIN WORDEN ANGELA CHENG

**Wellington & Company Estate Jewelry**

Estate Jewelry from the French Quarter in New Orleans.  
Wellington Jewelry of Royal Street, our inaugural exhibition.

**JULY 20–JULY 22 ONLY**

**Peter Ralston: Sightings and Beyond**

Black and white images of people and places along the coast of Maine.

A PORTION OF THE PROCEEDS FROM THIS SHOW WILL BE DONATED  
TO ISLAND INSTITUTE'S CRANBERRY ISLAND PROGRAM

**UPCOMING SHOWS**

August 3–August 16 **JEWELRY WITH WORDS/ARTIST MADE BOOKS/PAINTINGS WITH WORDS**

August 17–September 13 **CAGED/NELSON RARITIES INCREDIBLE ESTATE JEWELRY/JUDITH LARSEN**



SHAW JEWELRY

www.shawjewelry.com  
877.276.5001 207.276.5000

Pre-sorted  
First Class Mail  
US Postage Paid  
Permit No. 46  
Bangor, Maine



PO Box 608  
Northeast Harbor  
Maine 04662



PETER RALSTON

July 20–August 2, 2006

**Black and Gold Jewelry**  
**Wellington & Company Estate Jewelry**  
**Peter Ralston: Sightings and Beyond**

open daily until 6:30pm

**www.shawjewelry.com**  
**877.276.5001 207.276.5000**

SHAW JEWELRY 100 Main Street, Northeast Harbor